



## Plus2 V9.7 Enhancements

General release 15<sup>th</sup> November 2010

### Accompanied Attendance administration.

NOTES:

---

---

---

---

---

---

---

---

---

---

## c. Administration

- Working in parallel with the functionality of Accompanied Attendance, a new report has been introduced that will provide the following:-
  - An accurate list of adults and accompanying children that are current in the centre.
  - Specific details of the adult and accompanying children.
  - A flag to indicate if the accompanying adult is attending/staying in the centre.

NOTES:

---

---

---

---

---

---

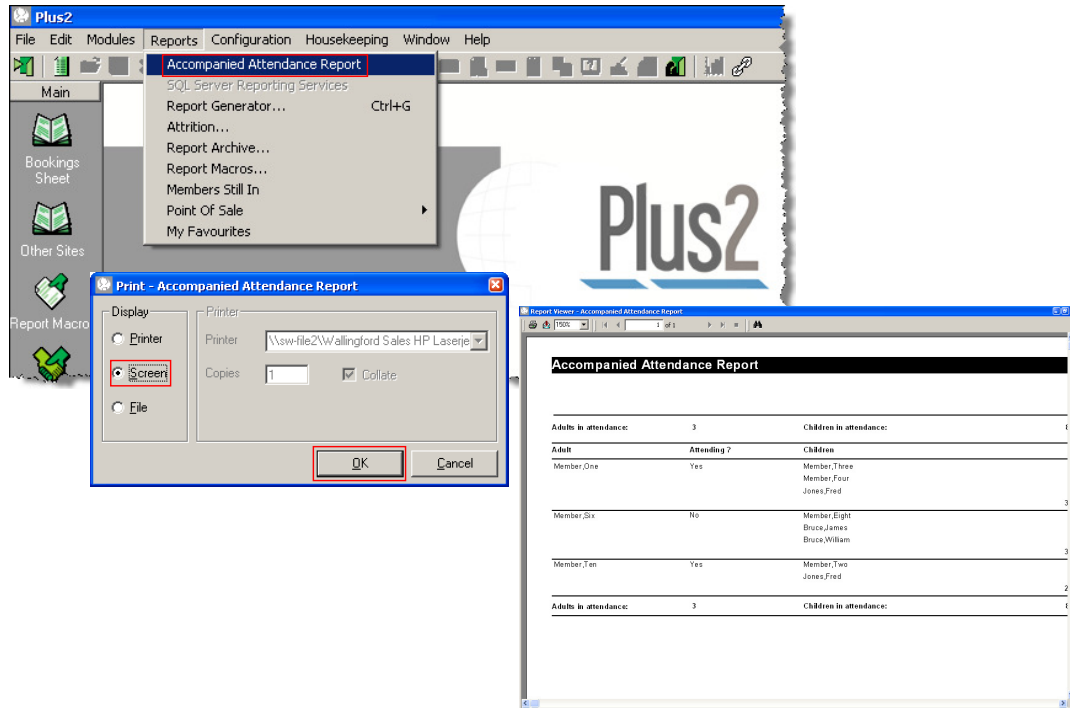
---

---

---

---

## i. Viewing the Accompanied Attendance report



NOTES:

---

---

---

---

---

---

---

---

---

---

### Viewing the Accompanied Attendance Report:

A new report has been introduced as part of the functionality of Accompanied Attendance, which provides the centre the ability to identify how many and who are in the centre.

- Select the menu option 'Reports' and choose 'Accompanied Attendance Report'.
- The user will be displayed the option in the 'Print - Accompanied Attendance Report' window, which in this example the default option 'Screen' is demonstrated.
- The user selects the option 'OK' and the report is displayed on the screen.

ii. Detail in the Accompanied Attendance report

Accompanied Attendance Report			
<b>Adults in attendance:</b>		3	<b>Children in attendance:</b>
			8
Adult	Attending ?	Children	
Member,One	Yes	Member,Three Member,Four Jones,Fred	
		3	
Member,Six	No	Member,Eight Bruce,James Bruce,William	
		3	
Member,Ten	Yes	Member,Two Jones,Fred	
		2	
<b>Adults in attendance:</b>		3	<b>Children in attendance:</b>
			8

NOTES:

---



---



---



---



---



---



---



---



---



---

**Detail in the Accompanied Attendance report:**  
 The report is made up of the following content:

- Total number of Adults and Children in attendance as a header and footer.
- Name details of the Adult and the names of the children that have been recorded against each adult.
- A flag of 'Attending' for each adult is provided and a total head count of the number of children associated to each accompanying adult.