



# Overview of Access Control Functionality

NOTES:

---

---

---

---

---

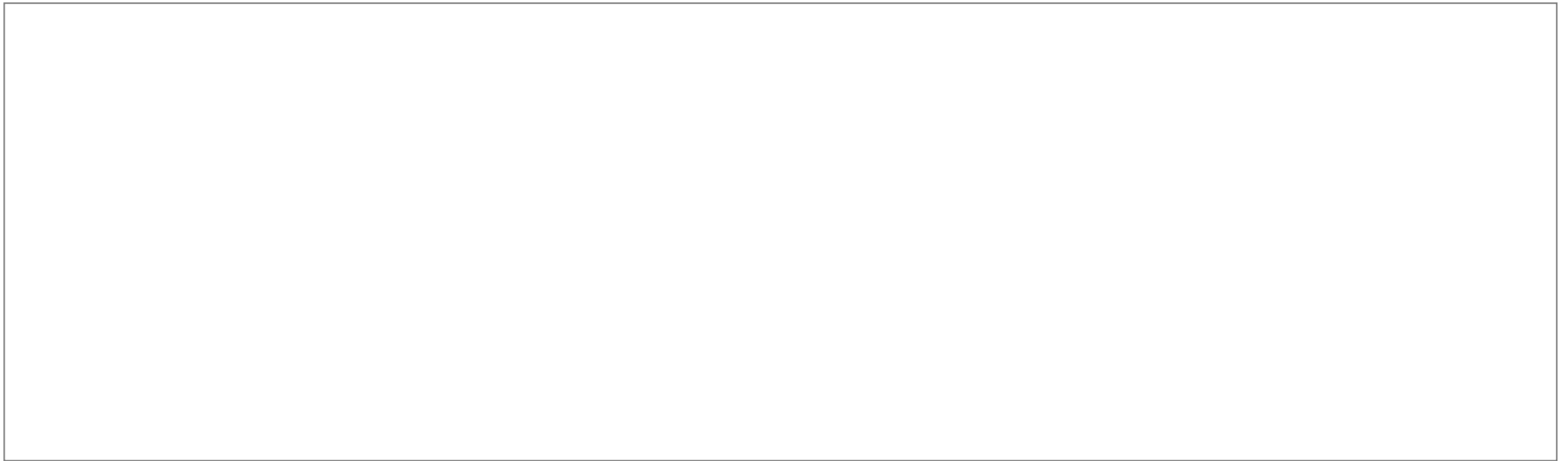
---

---

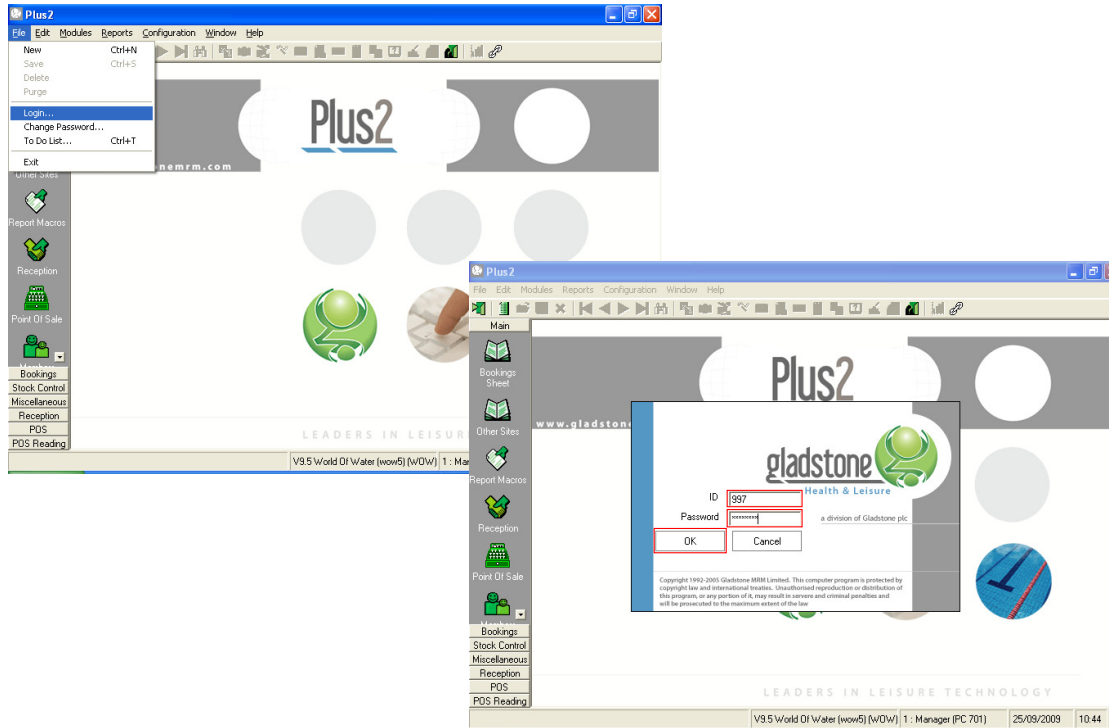
---

---

---



## 6. Login as the doorman user



NOTES:

---

---

---

---

---

---

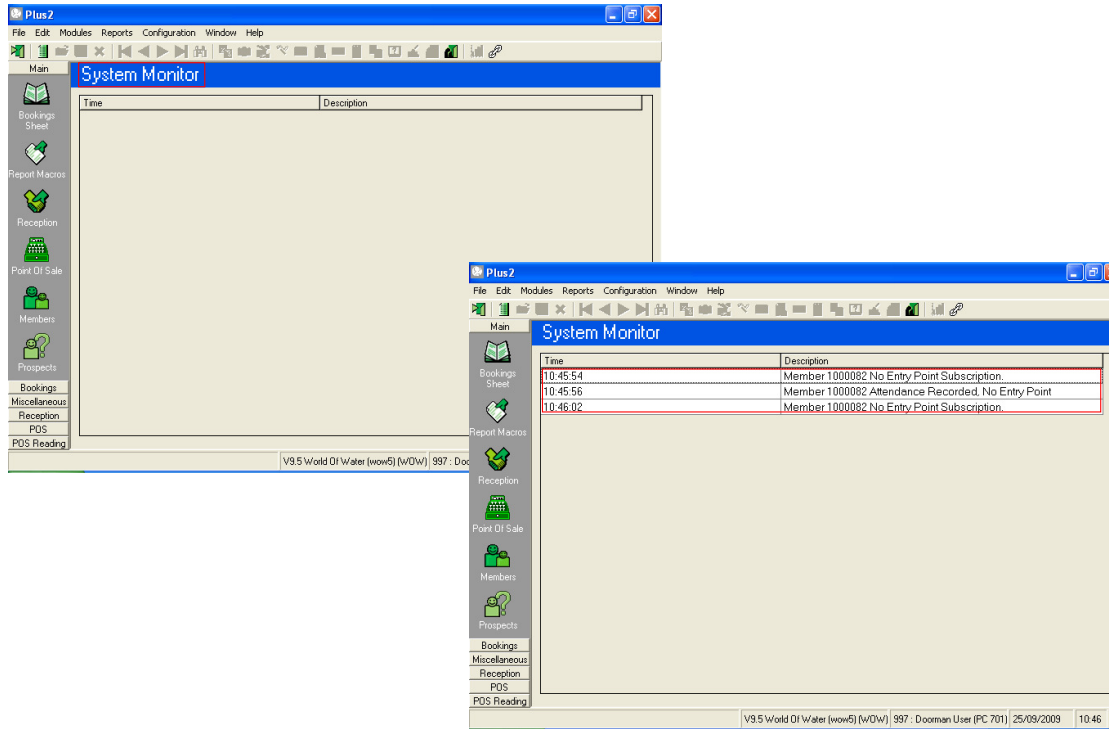
---

---

Once all the configuration has been completed, it only leaves the doorman user to be logged in on the dedicated doorman computers. Once logged in, the computer will monitor all card swipes and display any infringements to the staff.

- Choose the option 'File' and click 'Login', or logout of Plus2 completely and restart the application
- Login as the 'Doorman User' and enter the valid password

## 6. Login as the doorman user



NOTES:

---

---

---

---

---

---

---

---

---

---

- The 'System Monitor' screen will be presented and will display each instance of use through the turnstiles.