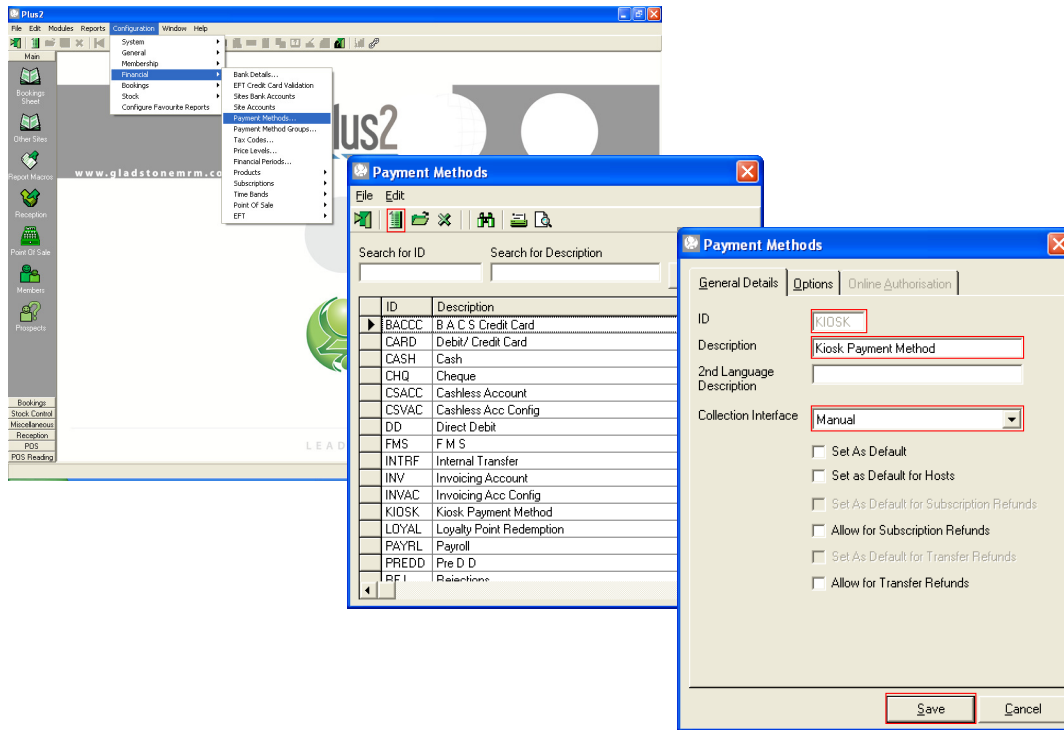




Kiosk Card Payment Configuration

NOTES:

Configure a Kiosk payment method

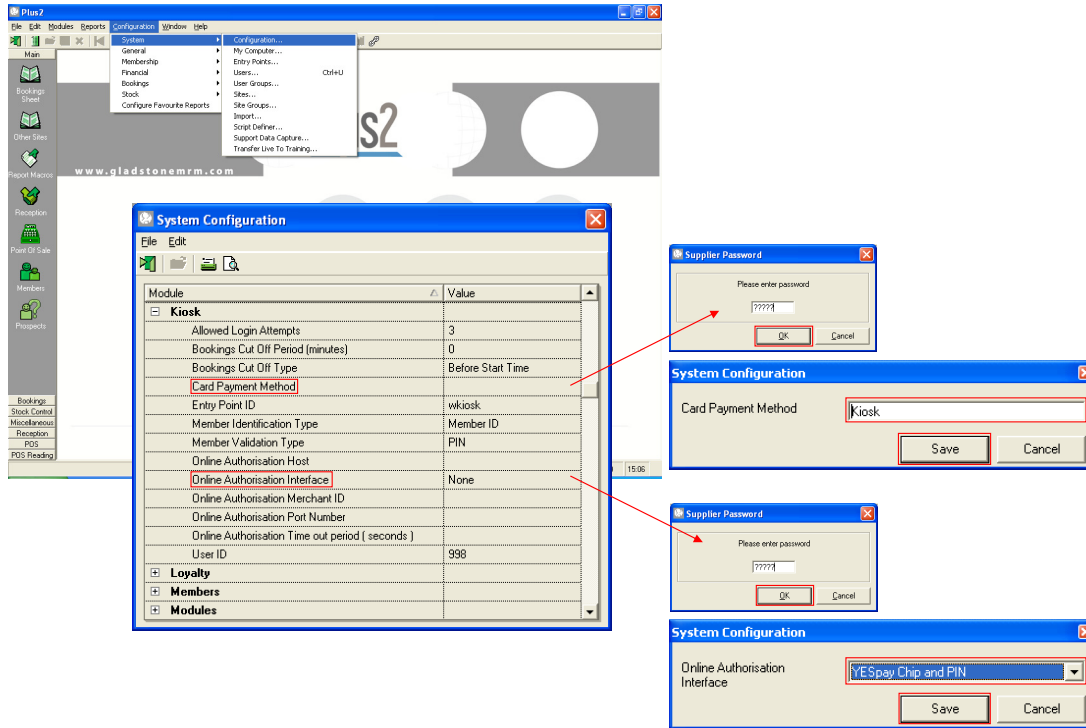


NOTES:

A payment method will need to be created and will be attributed to all sales that are generated through the Kiosk.

- Choose the menu option 'Configuration', select 'Financial' and click on 'Payment Methods'.
- Click on the toolbar option of 'New'.
- Define a unique 'ID'.
- Define a 'Description'.
- Click on 'Save' and you return to the list of payment methods.
- Select the toolbar option of 'Exit'.

Configure Kiosk system configuration



NOTES:

Plus2 system configuration will need to be modified to configure the payment method and payment authorisation interface.

- Choose the menu option 'Configuration', select 'System' and click on 'Configuration'.
- Expand the option 'Kiosk'.
- Double click to modify the option 'Payment Method ID'.
- You are prompted for the supplier password, which can be provided by Gladstone Customer Support Desk (08451 20 10 11).
- Type in the password and select 'OK'.
- Enter the 'Payment Method ID' and select 'Save'.
- Double click to modify the option of 'Online Authorisation Interface'.
- You are again prompted for the supplier password.
- Type in the password and select 'OK'.
- Click on the dropdown list icon, choose the payment interface 'YesPay Chip and Pin' and select on 'Save'.

Configure Kiosk system configuration

The main screenshot shows the 'System Configuration' window with the following settings for the 'Kiosk' module:

Module	Value
Allowed Login Attempts	3
Bookings Cut Off Period (minutes)	0
Bookings Cut Off Type	Before Start Time
Card Payment Method	KIOSK
Entry Point ID	wkiosk
Member Identification Type	Member ID
Member Validation Type	PIN
Online Authorisation Host	127.0.0.1
Online Authorisation Interface	YESpay Chip and PIN
Online Authorisation Merchant ID	
Online Authorisation Port Number	10000
Online Authorisation Time out period (seconds)	60
User ID	998

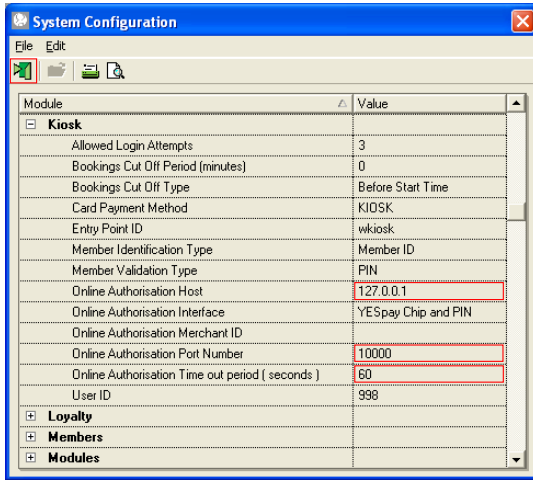
The following dialog boxes are shown in sequence:

- Supplier Password:** Prompted for a password (masked with '????').
- System Configuration:** 'Online Authorisation Host' field set to '127.0.0.1'.
- Supplier Password:** Prompted for a password (masked with '????').
- System Configuration:** 'Online Authorisation Port Number' field set to '10000'.
- Supplier Password:** Prompted for a password (masked with '????').
- System Configuration:** 'Online Authorisation Time out period (seconds)' field set to '60'.

NOTES:

- Once the payment method and online authorisation interface have been defined, Plus2 will resemble the example above.
- To configure the remaining online authorisation fields, firstly double click the option 'Online Authorisation Host'.
- You are again prompted for the supplier password.
- Type in the password and select 'OK'.
- Enter the localhost IP address for the kiosk. This will be used to direct Kiosk to the YesPay EasyV terminal application, which manages the YesPay payment process between the Kiosk and the YesPay payment servers hosted centrally at YesPay.
- Enter the localhost IP and select 'Save'.
- Double click to modify the option 'Online Authorisation Port Number'.
- You are again prompted for the supplier password.
- Type in the password and select 'OK'.
- Enter the port number, which will be used in conjunction with the Kiosk localhost IP address and establish connection with the YesPay EasyV terminal application.
- Enter the port number (i.e. 10000) and select 'Save'.
- Double click to modify the option 'Online Authorisation Time out period'.
- You are again prompted for the supplier password.
- Type in the password and select 'OK'.
- Enter a timeout period, which will be used if there is a delay in communication between the YesPay EasyV terminal application and the YesPay payment servers.
- Enter the timeout period in seconds (i.e. 60) and select 'Save'.

Configure Kiosk system configuration



NOTES:

- Once the complete the configuration should resemble with the above example and will be ready to communicate with the YesPay EasyV terminal application installed on the kiosk.
- Select the toolbar option 'Exit' to return to the Plus2 desktop.