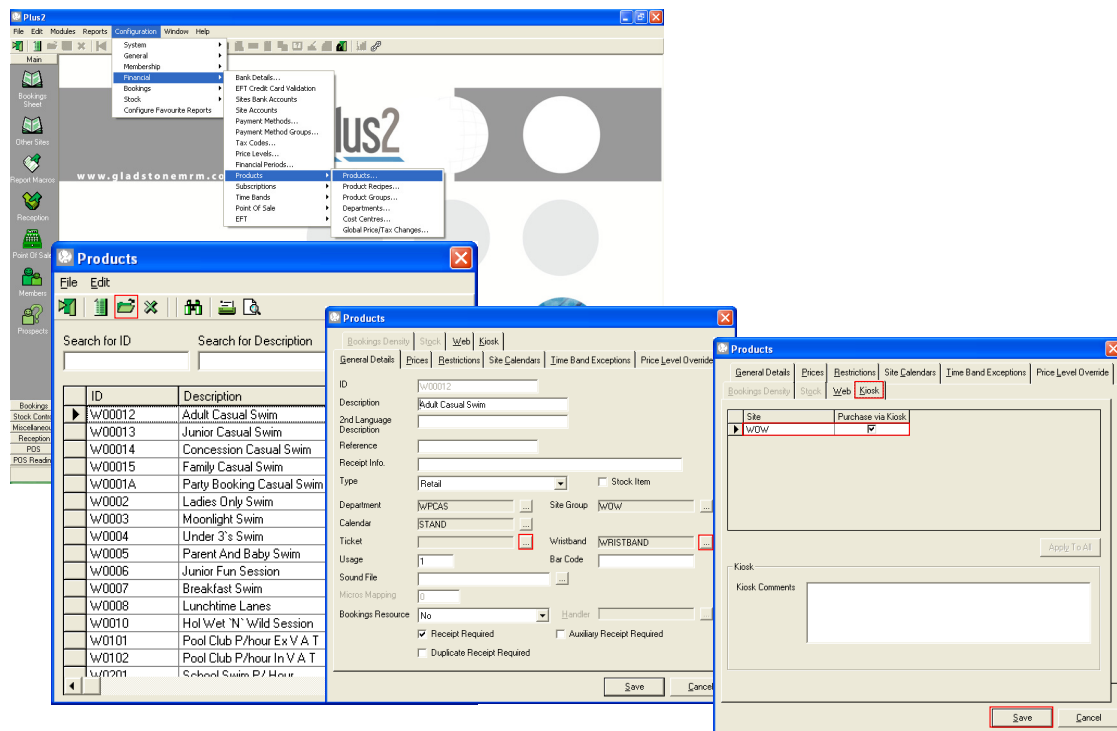




Kiosk Admission Product Configuration

NOTES:

1. Configure admission products



NOTES:

Configuration of existing products to be sold through the kiosk will need to be considered. This will involve the allocation of a ticket and/or wristband and invoking the option to purchase through the kiosk.

- Select the menu option of 'Configuration', 'Financial', choose 'Products' and click 'Products'.
- Find the product to be modified.
- Click the toolbar option of 'Modify'
- Click on the ellipses button for ticket and/or wristband allocation , and select the ticket/wristband layout.
- Click on the 'Kiosk' tab
- Click in the check box to invoke the 'Purchase via Kiosk' flag.
- This needs to be considered for each site where this product can be purchased.
- Click on the option of 'Save'.
- Repeat the process until all the products have been configured for kiosk purchase.
- Select the toolbar option of 'Exit'.