

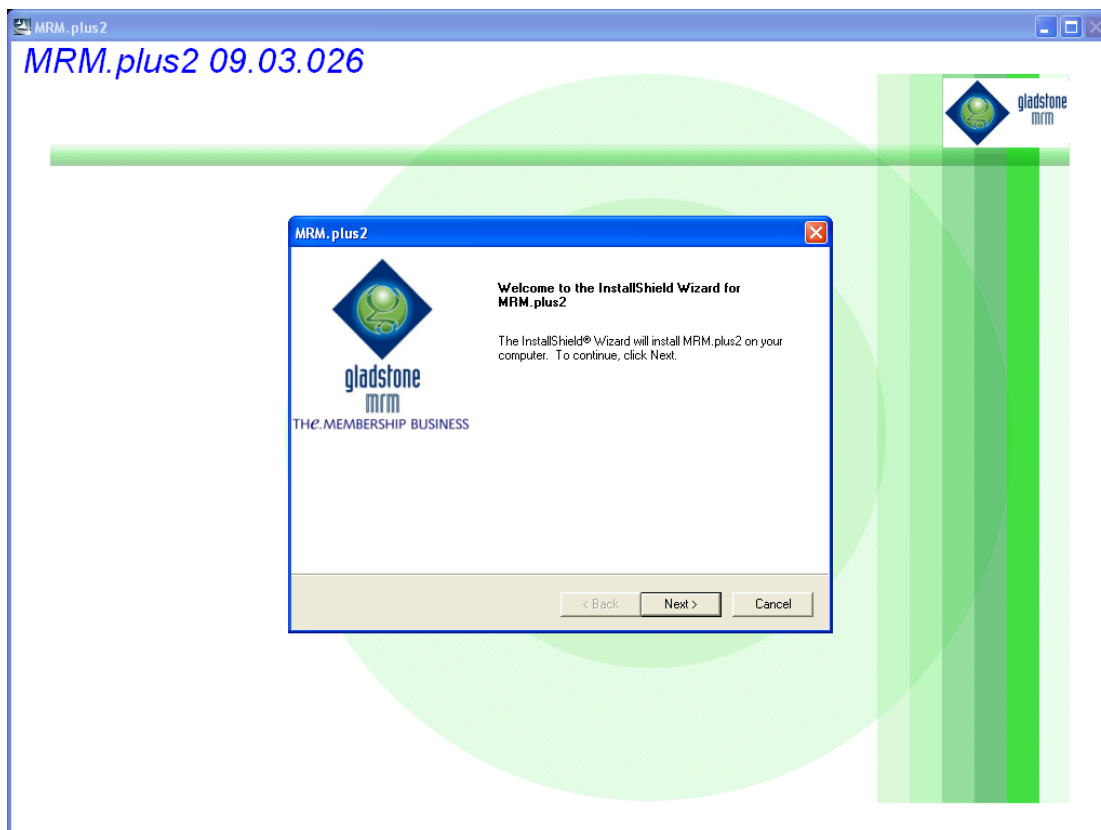
TECHNICAL INSTALLATION DOCUMENT

MRM.PLUS2 INSTALLATION GUIDE

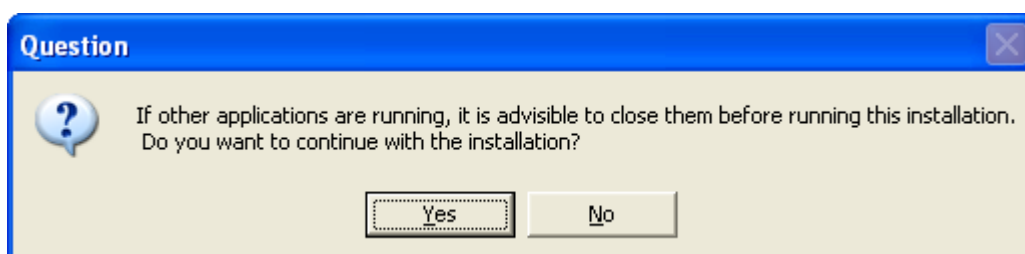


INSTALLATION GUIDE

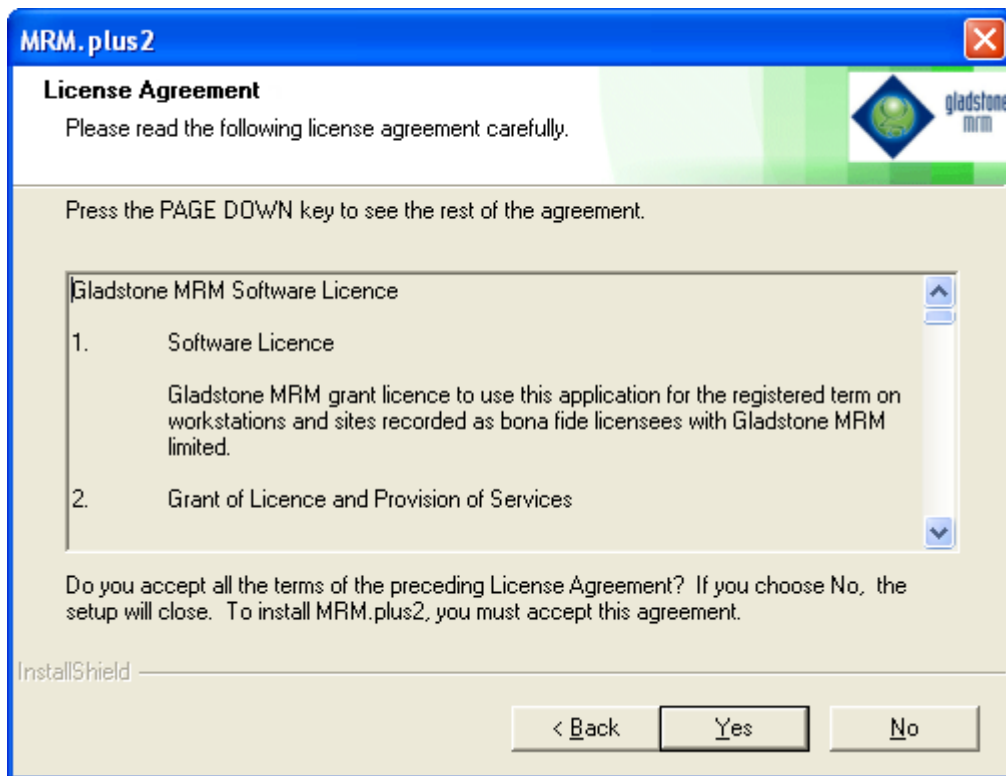
Run Setup.exe in the root of the CD (or install location)



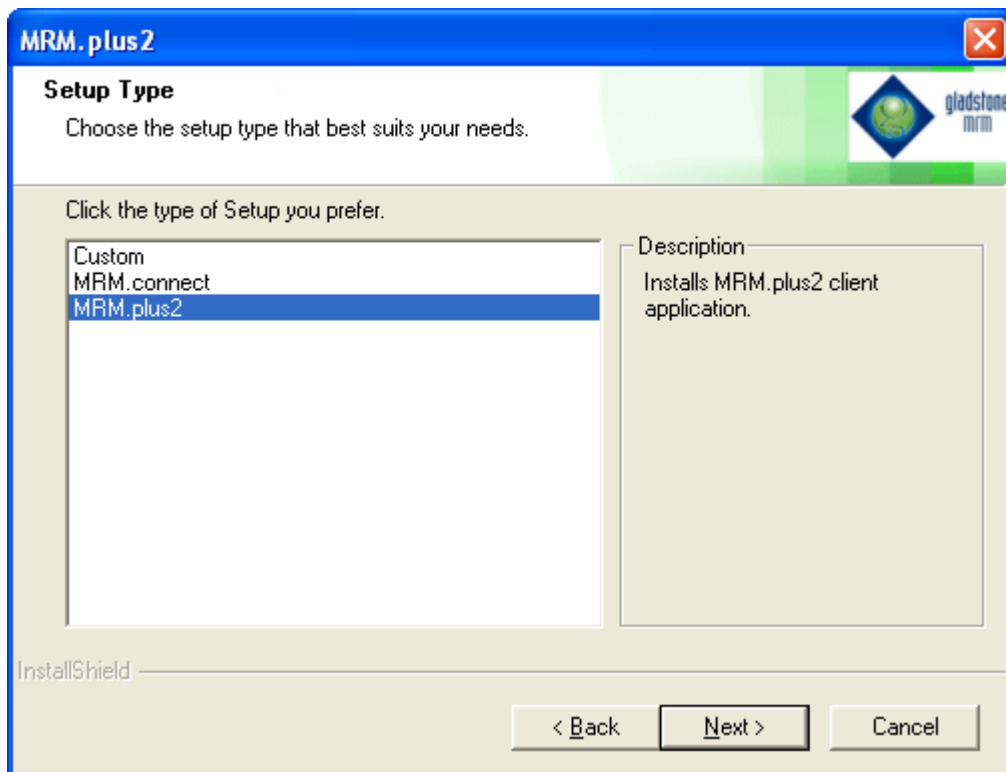
At the install splash screen click next



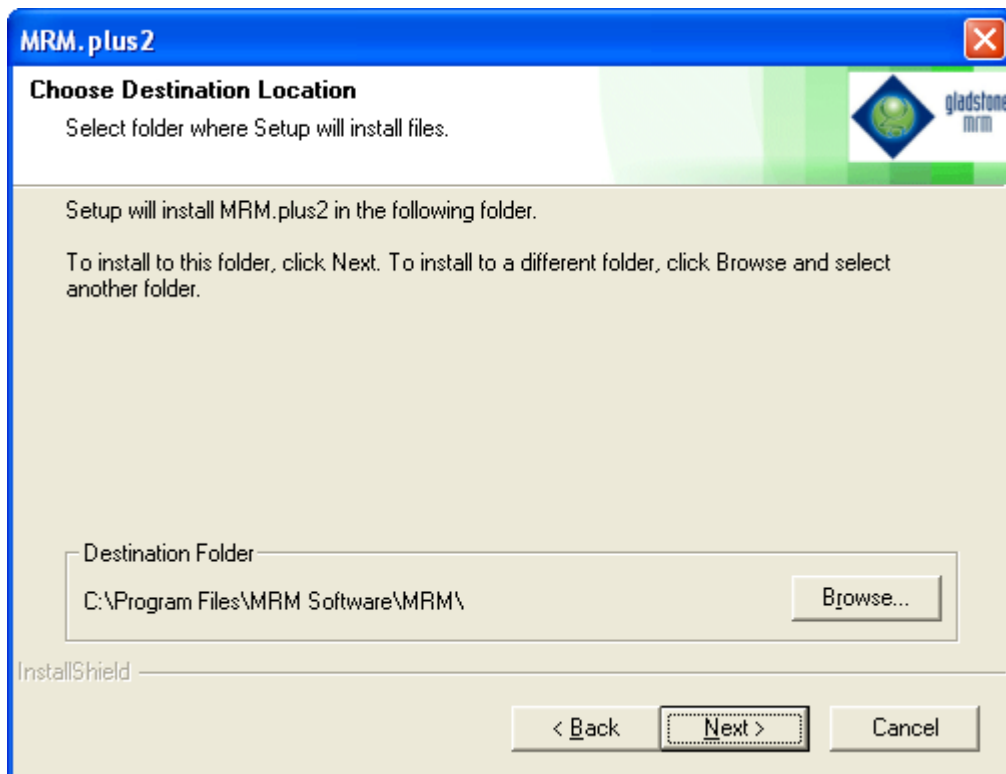
Close any unnecessary applications and click YES



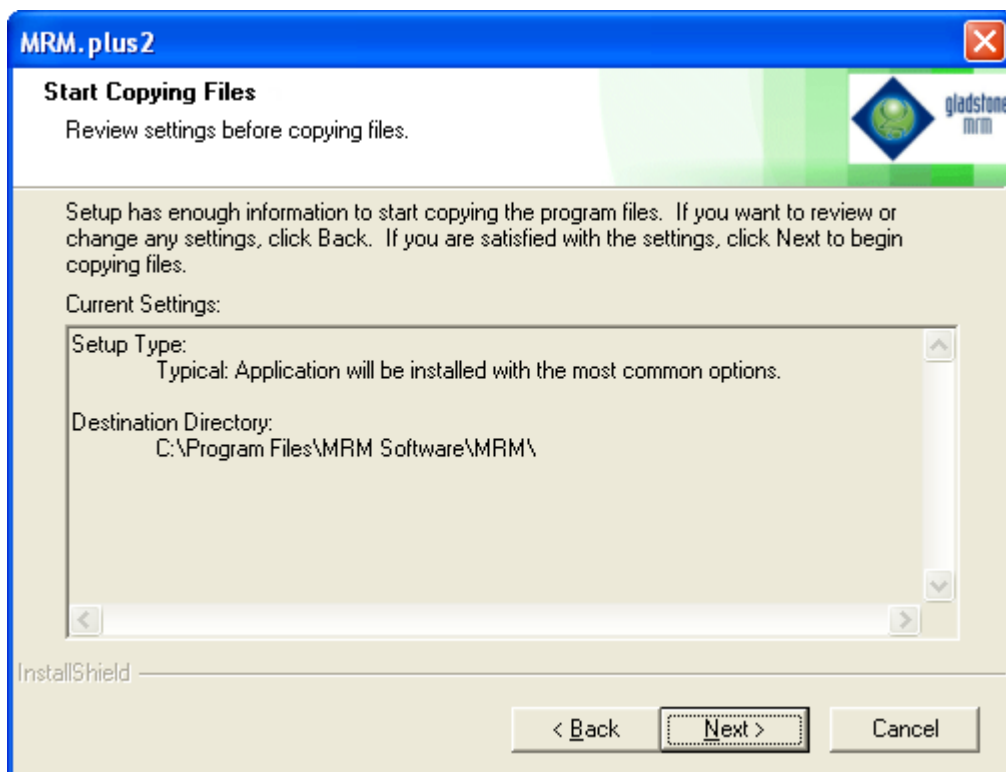
Read licence agreement and select YES



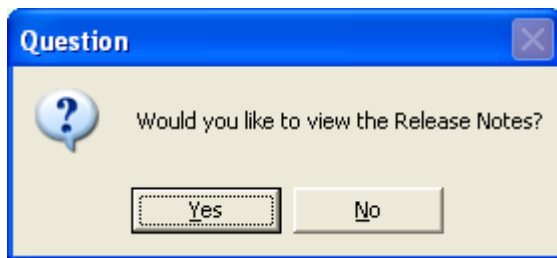
Ensure MRM.Plus2 is highlighted and click next



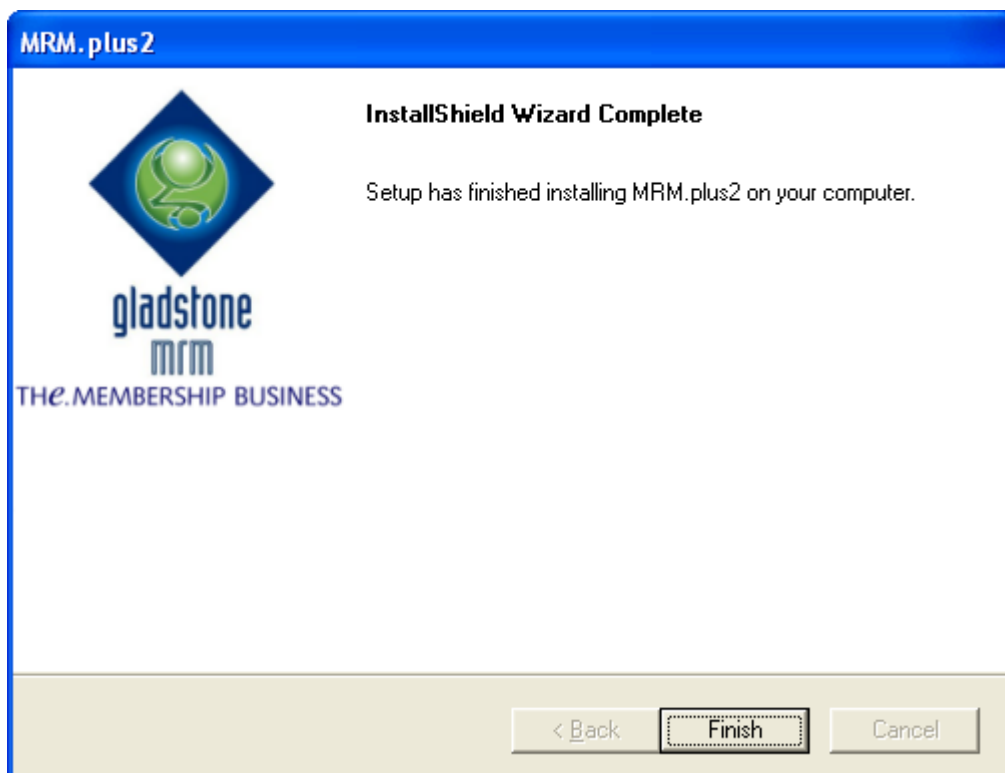
Brows to the desired location and click next



Confirm location and press next



Click no to continue



Click finish to end the install

If the installation request that you reboot the computer, this must be done before the installation can be finalized. One the computer has been rebooted log on as the same user.